



Clinical
Nutrition

Nutritional products

Enhance overall wellness and skin health
management for residents and patients

A close-up photograph of a woman's face and hands. She is smiling broadly, showing her teeth. She is wearing a white tank top under a light-colored, textured cardigan. She is holding a small, clear plastic container filled with a bright orange substance, likely a nutritional supplement or puree. She is using a silver spoon to scoop some of the orange substance. The background is softly blurred, showing a green plant and a wooden table.

**Nourish,
repair and
recover**

Better nutrition, better outcomes

Skin breakdown, weight loss and poor appetite are symptoms of malnutrition that can occur in the elderly, individuals undergoing chemotherapy, rehab and post-surgery patients. Keeping them well-nourished is no easy task.

Medline has the resources to help you deliver personalized solutions

As a global provider of healthcare supplies and medical foods, we're constantly expanding our nutritional offering with clinically supportive products formulated to help repair and nourish the body, enhance recovery, lessen the reliance on pharmacological intervention and reduce healthcare costs.

Our on-staff experts help you deliver patient-centric solutions

- Registered dietitians provide nutritional guidance and answer your questions
- Clinical skin and wound care experts address complex and difficult-to-heal wounds with nutritional solutions
- Dedicated representatives ensure you get the products and support you need



35%

of nursing home residents are affected by malnutrition¹



38–41%

elderly people who have a dietary protein intake below the RDA²



20–50%

of hospitalized patients at risk of malnutrition³



Skin Health

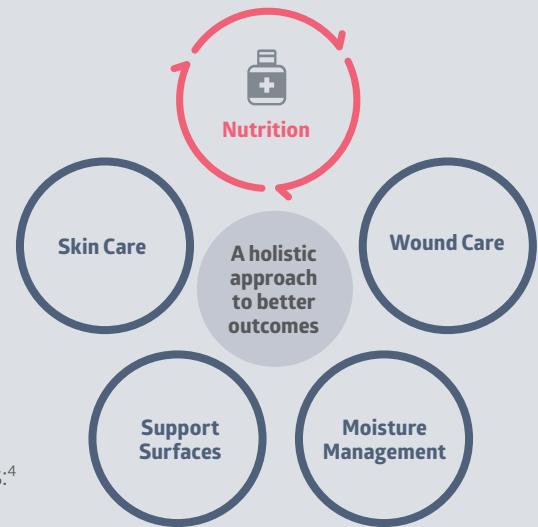
Advance toward **quality outcomes**

Medline's Skin Health program includes nutrition as an integral part of our holistic approach to an individual's overall well-being. This solution empowers your frontline staff to consistently deliver evidence-based best practices for skin health, positively impacting your clinical and financial outcomes.

Our holistic system of intuitive products, education and expert guidance helps you build a health program tailored to your patients' and residents' needs.

Studies have linked nutrition intervention to better patient outcomes:⁴

- Reduction in pressure ulcer incidence⁵
- Decrease in avoidable readmissions⁶
- Fewer days spent in the hospital⁷



Our nutrition product portfolio:

Active® liquid protein	4–5	Dietary Fiber+	12
Low volume concentrated protein to strengthen skin health and immune function		Helps support bowel health, regularity and digestion	
Active® Critical Care liquid protein	4–5	Dietary Fiber powder	12
Low volume vitamin and mineral-enhanced concentrated protein with added arginine, zinc and vitamin C for improved wound management		Supports digestive health and normal digestive function	
Active® TF	6	Banatrol® Plus	13
Amino acid-enhanced hydrolyzed protein designed for enteral nutrition		Banana flakes and prebiotic to aid in the management of diarrhea	
Active® protein powder	7	Active® food thickener	14
High protein powder for special dietary use		Instant thickener for food and beverages	
Gelatein®	8–9	Pre-Surgery Carb+	15
Low volume, clear protein- and calorie-enhanced gelatin snack to improve nutrition		Taken before surgery to reduce post-operative surgical stress and enhance recovery	
ArgiMent® AT	10		
Advanced therapy for the nutritional management of acute and chronic wounds			
Cranberry+	11		
Helps support and maintain a healthy urinary tract			

Our mission

We provide quality medical and nutrition products with superior value to help improve peoples' lives. We look forward to partnering with you.

Active® liquid protein

Ready-to-use concentrated nutrition

When diet alone is not enough, Active® liquid protein helps individuals get back to being themselves. Adequate protein intake plays an important role in maintaining health status and helping to prevent adverse outcomes.



Active Critical Care liquid protein

- Provides 18 g of protein per 1-oz serving
- Enhanced with arginine, zinc and vitamin C for targeted wound care support
- Does not contain glycerin
- Dual protein source of hydrolyzed collagen and whey protein
- Shelf-stable, refrigeration not recommended

Item No.	Description	Pkg.
ENT697UD	Active Critical Care liquid protein, Sugar-Free Citrus Berry Punch, 1-oz unit dose	100/cs
ENT697	Active Critical Care liquid protein, Sugar-Free Citrus Berry Punch, 30 oz	4/cs

Active liquid protein

- Provides 15 g of protein per 1-oz serving
- Dual protein source of hydrolyzed collagen and whey protein
- Does not contain glycerin
- Shelf-stable, refrigeration not recommended

Item No.	Description	Pkg.
ENT693CB	Active liquid protein, Citrus Berry Punch, 30 oz	4/cs
ENT693SFCB	Active liquid protein, Sugar-Free Citrus Berry Punch, 30 oz	4/cs
ENT693SFCBUD	Active liquid protein, Sugar-Free Citrus Berry Punch, 1-oz unit dose	100/cs
ENT693OC	Active liquid protein, Orange Crème, 30 oz	4/cs
ENT693SFOC	Active liquid protein, Sugar-Free Orange Crème, 30 oz	4/cs
ENT693SFUD	Active liquid protein, Sugar-Free Mild Citrus, 1-oz unit dose	100/cs

Nutrition facts

Active liquid protein Citrus Berry Punch

Nutrition Facts

Serving size: 1 fl oz (30 mL)

Amount per serving
Calories **100**

% Daily Value*

Total Fat 0 g **0%**

Saturated Fat 0 g **0%**

Trans Fat 0 g

Cholesterol 0 mg **0%**

Sodium 20 mg **1%**

Total Carbohydrates 11 g **4%**

Dietary Fiber 0 g **0%**

Total Sugars 9 g

Includes 9 g Added Sugars **18%**

Protein 15 g **30%**

Vitamin D 0 mcg 0% Calcium 0 mg 0%

Iron 0 mg 0% Potassium 8 mg 0%

Phosphorus 24 mg 2%

*The % Daily Value (DV) tells you how much a nutrient in a serving of food contributes to a daily diet. 2,000 calories a day is used for general nutrition advice.

Active liquid protein Sugar-free Orange Crème

Nutrition Facts

Serving size: 1 fl oz (30 mL)

Amount per serving
Calories **60**

% Daily Value*

Total Fat 0 g **0%**

Saturated Fat 0 g **0%**

Trans Fat 0 g

Cholesterol 0 mg **0%**

Sodium 15 mg **1%**

Total Carbohydrates 0 g **0%**

Dietary Fiber 0 g **0%**

Total Sugars 0 g

Includes 0 g Added Sugars **0%**

Protein 15 g **30%**

Vitamin D 0 mcg 0% Calcium 2 mg 0%

Iron 0 mg 0% Potassium 14 mg 0%

Phosphorus 49 mg 4%

*The % Daily Value (DV) tells you how much a nutrient in a serving of food contributes to a daily diet. 2,000 calories a day is used for general nutrition advice.

Active Critical Care liquid protein Sugar-free Citrus Berry Punch

Nutrition Facts

Serving size: 1 fl oz (30 mL)

Amount per serving
Calories **80**

% Daily Value*

Total Fat 0 g **0%**

Saturated Fat 0 g **0%**

Trans Fat 0 g

Cholesterol 0 mg **0%**

Sodium 30 mg **1%**

Total Carbohydrates 1 g **0%**

Dietary Fiber 0 g **0%**

Total Sugars 0 g

Includes 0 g Added Sugars **0%**

Protein 18 g **36%**

Vitamin D 0 mcg 0% Calcium 2 mg 0%

Iron 0 mg 0% Potassium 25 mg 0%

Vitamin C 175 mg 190% Phosphorus 51 mg 4%

Zinc 10 mg 90%

*The % Daily Value (DV) tells you how much a nutrient in a serving of food contributes to a daily diet. 2,000 calories a day is used for general nutrition advice.

Ingredients and specifications

Contains milk. Do not mix with tube feeding formula.
Not for parenteral use. Lactose- and gluten-free.

Active liquid protein Citrus Berry Punch

Ingredients: Protein (from collagen hydrolysate and whey isolate), Purified Water, Sucrose, Natural Flavors, Citric Acid, Malic Acid, Phosphoric Acid, L-Tryptophan, Potassium Sorbate and Sodium Benzoate (preservatives), Red 40.

Active liquid protein Sugar-free Orange Crème

Ingredients: Purified water, Protein (from collagen hydrolysate and whey isolate), Natural and Artificial Flavors, Citric Acid, Phosphoric Acid, Malic Acid, L-Tryptophan, Potassium Sorbate and Sodium Benzoate (preservatives), Sucralose, Acesulfame Potassium, Yellow 5.

Active Critical Care liquid protein Sugar-free Citrus Berry Punch

Ingredients: Protein (from collagen hydrolysate and whey isolate), Purified Water, L-Arginine, Natural and Artificial Flavors, Malic Acid, Citric Acid, Ascorbic Acid, Phosphoric Acid, L-Tryptophan, Sucralose, Acesulfame Potassium, Sodium Hexametaphosphate, Potassium Sorbate and Sodium Benzoate (preservatives), Zinc Sulfate, Red 40.

Dosing and administration

Oral: Pour Active liquid protein or Active Critical Care directly into a medication cup, drink by mouth and document—or add it to beverages, soups, hot and cold foods, and purees. Saves nursing time, storage space, waste, and kitchen labor. It mixes easily into all liquids and moist foods.

Enteral: Mix 1-oz of Active with with 1-oz (30 mL) water and administer through feeding tube via syringe. Flush feeding tube with 30 mL before and after administration. Do not mix with formula. Not for parenteral use.



Active® TF

Protein for enteral nutrition

Active TF is an amino acid enhanced hydrolyzed protein exclusively designed for enteral nutrition support. Because of its water thin consistency, it does not require mixing or dilution, reducing labor time and increasing compliance.

- Contains 11 g of protein and 40 calories per 45 mL serving; PDCAAS 100
- Amino acid-enhanced hydrolyzed protein for those with increased proteins needs is formulated for enteral tube feeding nutrition
- Water-thin, high-quality liquid protein can be administered via feeding tube without mixing or diluting
- Sugar-free, no artificial sweeteners, colors, dyes or flavors; does not contain glycerin
- Dairy-free, lactose-free and gluten-free

Item No.	Description	Pkg.
ENT444	Active TF Liquid Protein, unflavored, 45 mL	100/cs



Nutrition facts

Nutrition Facts

1 serving per container	
Serving size: 1 packet (45 mL)	
Amount per serving	
Calories	40
% Daily Value*	
Total Fat 0 g	0%
Saturated Fat 0 g	0%
Trans Fat 0 g	
Cholesterol 0 mg	0%
Sodium 35 mg	2%
Total Carbohydrates 0 g	0%
Dietary Fiber 0 g	0%
Total Sugars 0 g	
Includes 0 g Added Sugars	0%
Protein 11 g	22%
Vitamin D 0 mcg	0%
Calcium 3 mg	0%
Iron 0 mg	0%
Potassium 11 mg	0%
Phosphorus 48 mg	4%

*The % Daily Value (DV) tells you how much a nutrient in a serving of food contributes to a daily diet. 2,000 calories a day is used for general nutrition advice.

Ingredients and specifications

Ingredients: Purified Water, Protein from Beef Collagen Hydrolysate, Amino Acids (l-leucine, l-lysine, l-methionine, l-isoleucine, l-histidine, l-valine, l-threonine, l-phenylalanine, l-tryptophan), Malic Acid, Phosphoric Acid, Potassium Sorbate and Sodium Benzoate (preservatives). Not a sole source of nutrition. Use under medical supervision.

Do not mix with tube feeding formula. Not for parenteral use.

Lactose- and gluten-free.

Dosing and administration

Enteral: Shake before use. Active TF can be infused directly into the feeding tube via syringe without mixing or diluting with water. Flush tube with 15-30 mL of water before and after administration. **Active TF has a water-thin consistency and will not clog a clean, well maintained tube. Appropriate for NG-tube, G-tube and J-tube.**

Not for use by infants or children under age 4, pregnant or lactating women. Do not drink straight from the packet. Should not be used for weight reduction. **Do not refrigerate. Shelf stable.**

Active[®] protein powder

High protein powder

Active protein powder is a high-quality source of concentrated protein with a well-balanced amino acid profile. It mixes easily and completely into beverages and soft foods.

- 6 g of whey protein per serving
- Provides a well-balanced amino acid profile
- Appropriate for oral and enteral use

Item No.	Description	Pkg.
ENT32109	Active protein powder, 8-oz jar	6/cs
ENT32109H	Active protein powder, 8-oz jar	1 ea



Nutrition facts

Nutrition Facts	
About 32 servings per container	
Serving size: 1 scoop (7 g)	
Amount per serving	25
Calories	
% Daily Value*	
Total Fat 0 g	0%
Saturated Fat 0 g	0%
Trans Fat 0 g	
Cholesterol 0 mg	0%
Sodium 10 mg	0%
Total Carbohydrates 0 g	0%
Dietary Fiber 0 g	0%
Total Sugars 0 g	
Includes 0 g Added Sugars	0%
Protein 6 g	12%
Vitamin D 0 mcg	0%
Calcium 30 mg	2%
Iron 0 mg	0%
Potassium 39 mg	0%
*The % Daily Value (DV) tells you how much a nutrient in a serving of food contributes to a daily diet. 2,000 calories a day is used for general nutrition advice.	

Ingredients and specifications

Ingredients: Whey protein isolate (contains soy lecithin).

Gluten free. Contains milk and soy.

Dosing and administration

Oral: Stir one scoop (included) of Active protein powder into at least a 4 oz beverage or soft food. Stir until completely dissolved.

Enteral: Stir in one scoop of Active protein powder into 2-4 fl oz of water. Stir until completely dissolved. Administer by syringe through feeding tube. Flush with 30 mL of water both before and after administration. **Do not mix with formula.**

Always follow physician instructions for tube feeding use.

Not for parental use.

Gelatin®

Delivers 2–3 times the protein of nutritional shakes

Maintaining protein stores is essential for recovery. Individuals who are protein malnourished or have lost lean body mass are at an increased risk for complications. Ensure people get the protein they need without over-feeding calories. Consume Gelatein as a snack between meals for maximum protein absorption.



Gelatein 20

- Sugar-free, low volume, clear protein gelatin snack
- Each convenient, easy-to-serve, 4-oz cup contains 20 g of protein and 80 calories
- Made with hydrolyzed collagen protein and whey protein isolate for rapid absorption and utilization
- IDDSI Level 4 extremely thick consistency usually eaten with spoon or fork for those with dysphagia diet

Item No.	Description	Pkg.
ENT690	Gelatein 20 Fruit Punch, 4-oz cup	36/cs
ENT691	Gelatein 20 Orange, 4-oz cup	36/cs



Gelatein Plus

- Calorie-enhanced, low-volume, clear protein gelatin snack made with hydrolyzed collagen protein and whey protein isolate to help with rapid absorption and utilization for improved nutrition
- Each convenient, easy-to-serve, 4-oz cup contains 20 g of protein and 160 calories
- IDDSI Level 4 extremely thick consistency usually eaten with spoon or fork for those with dysphagia diet

Item No.	Description	Pkg.
ENT701	Gelatein Plus Cherry, 4-oz cup	36/cs
ENT703	Gelatein Plus Lemon, 4-oz cup	36/cs
ENT705	Gelatein Plus Pineapple, 4-oz cup	36/cs

Nutrition facts

Gelatein 20 Fruit Punch

Nutrition Facts

1 serving per container
Serving size: 1 cup (4 fl oz) (118 mL)

Amount per serving
Calories **80**

% Daily Value*

Total Fat 0 g **0%**

Saturated Fat 0 g **0%**

Trans Fat 0 g

Cholesterol 0 mg **0%**

Sodium 30 mg **1%**

Total Carbohydrates <1 g **0%**

Dietary Fiber <1 g **3%**

Total Sugars 0 g

Includes 0 g Added Sugars **0%**

Protein 20 g **40%**

Vitamin D 0 mcg 0% Calcium 52 mg 4%

Iron 0 mg 0% Potassium 120 mg 2%

*The % Daily Value (DV) tells you how much a nutrient in a serving of food contributes to a daily diet. 2,000 calories a day is used for general nutrition advice.

Gelatein Plus Cherry

Nutrition Facts

1 serving per container
Serving size: 1 cup (4 fl oz) (118 mL)

Amount per serving
Calories **160**

% Daily Value*

Total Fat 0 g **0%**

Saturated Fat 0 g **0%**

Trans Fat 0 g

Cholesterol 0 mg **0%**

Sodium 35 mg **2%**

Total Carbohydrates 20 g **7%**

Dietary Fiber 2 g **7%**

Total Sugars 18 g

Includes 18 g Added Sugars **36%**

Protein 20 g **40%**

Vitamin D 0 mcg 0% Calcium 16 mg 2%

Iron 0 mg 0% Potassium 110 mg 2%

*The % Daily Value (DV) tells you how much a nutrient in a serving of food contributes to a daily diet. 2,000 calories a day is used for general nutrition advice.

Ingredients and specifications

Gelatein 20 Fruit Punch

Ingredients: Water, Protein (from collagen hydrolysate and whey protein isolate), Malic Acid, Carrageenan and Carob Bean Gum, Natural Flavors, Potassium Citrate, L-Tryptophan, Sucralose, Acesulfame Potassium, Potassium Sorbate and Sodium Benzoate (preservatives), Red 40.

Contains milk. Does not contain strawberries. Can be stored at room temperature. Not a sole source of nutrition. Suitable for a dysphagia diet.

Gelatein Plus Cherry

Ingredients: Purified water, Protein (from collagen hydrolysate and whey protein isolate), Sugar, Malic Acid, Carrageenan and Locust Bean Gum, Natural Flavors, Potassium Citrate, L-Tryptophan, Sucralose, Potassium Sorbate, Sodium Benzoate (preservative), Red 40.

Contains milk. Can be stored at room temperature. Not a sole source of nutrition. Suitable for a dysphagia diet.

Dosing and administration

For oral use only.

Each 4-oz serving of Gelatein contains 20 g of high-quality protein.

Current RDA for protein intake for an adult is 0.8 g protein/kg body weight/day. More protein may be required for certain conditions such as wound healing, which may need 1.2–1.5 g/kg of protein. Take orally between meals or during meal time to increase protein intake.



ArgiMent® AT

Nutrition management for wound healing

Wound healing starts in the gut. When patients don't receive adequate nutrition and hydration, wounds cannot heal properly. ArgiMent AT is a high-nitrogen formula containing protein, amino acids, vitamin C, minerals and a prebiotic, which have been shown to support wound healing.⁸



- Formulated for the nutritional management of pressure injuries and surgical wounds
- Easy-to-use powder formulation
- Helps break cycle of malnutrition, poor wound healing and repair
- Mixes easily in 6–8 oz of water or juice
- Can be taken orally or through enteral feeding tube

Item No.	Description	Pkg.
ENT220	ArgiMent AT, 42.75 g packet	60/cs



Nutrition facts

Nutrition Facts

1 serving per container
Serving size: 1 packet (42.75 mL)

Amount per serving
Calories 120

% Daily Value*

Total Fat 0 g **0%**

Saturated Fat 0 g **0%**

Trans Fat 0 g

Cholesterol 25 mg **8%**

Sodium 40 mg **2%**

Total Carbohydrates 6 g **2%**

Dietary Fiber <1 g **3%**

Total Sugars 6 g

Includes 5 g Added Sugars **10%**

Protein 10 g **20%**

Vitamin D 0 mcg 0% Calcium 83 mg 6%

Iron 0 mg 0% Potassium 87 mg 2%

Vitamin C 250 mg 380% Phosphorus 35 mg 2%

Zinc 12.5 mg 110% Copper 1 mg 110%

*The % Daily Value (DV) tells you how much a nutrient in a serving of food contributes to a daily diet. 2,000 calories a day is used for general nutrition advice.

Ingredients and specifications

Ingredients: Whey Protein Concentrate, L-Arginine, L-Glutamine, Orange Juice Powder, Fructose, Citric Acid, Bimuno® (trans-galactooligosaccharide, lactose, glucose, galactose), Orange Flavor, Calcium Ascorbate, Sucralose, Zinc Sulfate, Copper Gluconate, Yellow 6.

Gluten free. Contains milk.

Dosing and administration

Oral: Mix one packet with 180–240 mL cold water or juice BID (two times daily). Mixing with hot beverages may reduce potency of glutamine.

Enteral: Mix one packet with 120 mL of water. Stir until completely dissolved. Administer slowly via syringe. Flush with 30 mL water before and after administration.

Do not mix with tube feeding formula. Not a sole source of nutrition.

Contraindications: Not for use by patients suffering from dehydration, compromised renal function or liver disease.
Not for parenteral use.

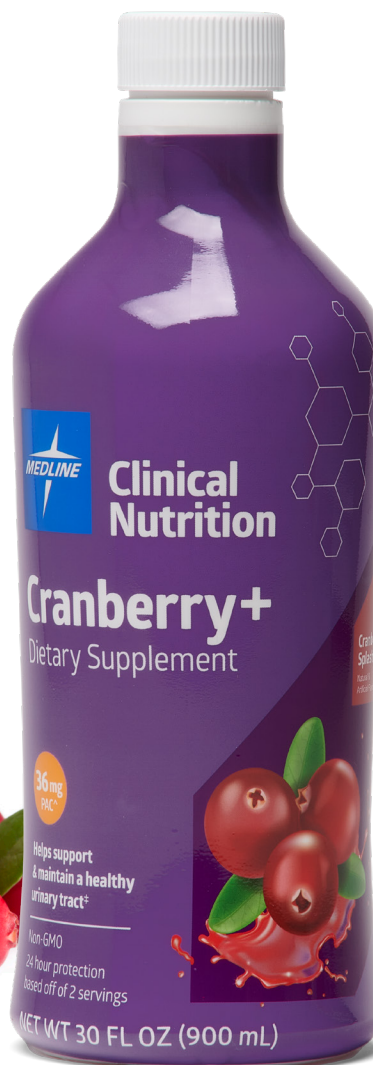
Cranberry+

Helps support and maintain a healthy urinary tract†

A healthy urinary tract is essential to maintaining overall health. Left untreated it may spread to the kidneys, where bacteria can get into the bloodstream. Cranberry+ all-natural liquid drink helps maintain and support a health microbiome and colon, helping to stimulate the growth of beneficial bacteria.†

- The Proanthocyanidins (PAC)* in cranberries exhibit potent bacterial anti-adhesion activity at 36 mg PAC** and 24-hour protection (based on two servings)†
- Specialized formula with Cranberry Concentrate, D-Mannose, Erythritol, Vitamin C and Inulin helps maintain and support a healthy urinary tract†
- Does not contain Bromelain, which can cause an interaction with Warfarin and some antibiotics
- Cranberry Splash flavor

Item No.	Description	Pkg.
ENTUTI	Cranberry+ liquid UTI dietary supplement, 30-oz bottle	6/cs



† These statements have not been evaluated by the FDA. This product is not intended to diagnose, treat, cure or prevent any disease

* (PAC) per BL-DMAC standard method

** Whole fruit cranberry powder standardized to contain 36 mg proanthocyanidins

Supplement facts

Supplement Facts

Serving size: 1 fl oz (30 mL)
Servings per container: 30

Amount per serving	% Daily Value*
Calories 30	
Total Carbohydrate 7 g	2%*
Sugars 2 g	
Sugar Alcohols 5 g	
Sodium 20 mg	<1%
Potassium 16 mg	<1%

Proprietary Blend 6620 mg **

Erythritol, Cranberry (*Vaccinium macrocarpon*) Juice Concentrate [standardized to contain 36 mg of proanthocyanidins per BL-DMAC standard method], Ascorbic Acid, Inulin HD (*Jerusalem artichoke tuber*), D-Mannose.

*Percent Daily Values are based on a 2,000 calorie diet.

**Daily Value not established.

Ingredients and specifications

Ingredients: Proprietary blend:

Erythritol, Cranberry (*Vaccinium macrocarpon*) Juice Concentrate [standardized to contain 36 mg of proanthocyanidins per BL-DMAC standard method], Ascorbic Acid, Inulin HD (*Jerusalem artichoke tuber*), D-Mannose.

Other ingredients:

Deionized Water, Xylitol, Natural & Artificial Flavor, Potassium Sorbate (Preservative), Sucralose (Sweetener).

Gluten-, lactose- and soy-free

Dosing and administration

Shake well.

Oral: Take 1 fl oz (30 mL) 1–2 times per day by mouth or mix with any hot or cold beverage or food.

Enteral: Infuse Cranberry+ via syringe through feeding tube. Flush with at least 30 mL of water both before and after use. Continue tube feeding as prescribed. **Do not mix with tube feeding formula.**

Not for parenteral use. Not a substitute for antibiotics.

Dietary fiber

Helps support bowel health, regularity and digestion*

The discomfort and stress of bowel irregularities can be challenging to manage. Dietary fiber helps stimulate the growth of beneficial bacteria to maintain a health colon and encourage bowel regularity.

Dietary Fiber+

- 15 g fiber per 1-oz serving
- Helps supports bowel health, regularity and digestion for patients and residents with occasional constipation and other irregular bowel issues*
- Formulated with fiber and prebiotic inulin, which helps stimulate growth of beneficial bacteria to support healthy microbiome and colon*
- Made with nondigestible complex carbohydrates designed to maintain blood sugar balance*
- Sugar-free Vanilla Crème flavor

Item No.	Description	Pkg.
ENTFIBER	Dietary Fiber+ liquid supplement, Vanilla Crème, 32-oz bottle	6/cs

*This statement has not been evaluated by the Food and Drug Administration. This product is not intended to diagnose, treat, cure, or prevent any disease.

Dosing and administration

Dietary Fiber+

Shake well.

Oral: Take 1/2–1 fl oz (15–30 mL) by mouth or mix with any hot or cold beverage or food. Slowly increase to reach 1–3 times per day, as needed. If using laxatives, gradually discontinue them after satisfactory bowel function. It is important to increase fluid intake with increased dietary fiber.

Enteral: Infuse via syringe through feeding tube. Flush with at least 30 mL of water both before and after use. Continue tube feeding as prescribed. **Do not mix with tube feeding formula. Not for parenteral use.**

Dietary Fiber powder

- 3 g powder fiber per serving
- Easy to mix powder

Item No.	Description	Pkg.
ENT32309	Dietary Fiber powder, unflavored, 7.2 oz jar	6/cs



Dietary Fiber powder

Oral: Stir one scoop (included) of Medline Fiber into at least a 4-oz beverage or soft food (hot or cold). Stir until completely dissolved and enjoy immediately.

Enteral: Stir in one scoop of Medline dietary fiber into 2–4 fl oz of water. Stir until completely dissolved. Administer by syringe through feeding tube. Not for parenteral use. Flush with 30 mL of water both before and after use. **Not for parenteral use.**

Fiber may not be suitable for all patients who are receiving tube feedings. Always follow physician instructions for tube feeding use.

Nutrition facts

Dietary Fiber+

Supplement Facts

Serving size: 1 fl oz (30 mL)
Servings per container: 32

Amount per serving	% Daily Value*
Calories 40	
Total Carbohydrate 17 g	6%*
Dietary Fiber 15 g	54%*
Soluble Fiber 15 g	**
Sugar 0 g	**
Sodium 75 mg	3%
Potassium 24 mg	<1%

*Percent Daily Values are based on a 2,000 calorie diet.

**Daily Value not established.

Dietary Fiber+

Ingredients: Deionized Water, Soluble Fiber Blend (Polydextrose and Prebiotic Inulin [Jerusalem artichoke tuber and/or chicory root]), Sodium Chloride, Artificial Vanilla Flavor, Citric Acid, Potassium Sorbate (Preservative), Sodium Benzoate (Preservative), Sucralose (Sweetener).

Dietary Fiber powder

Nutrition Facts

About 51 servings per container
Serving size: 1 scoop (4 g)

Amount per serving	% Daily Value*
Calories 5	
Total Fat 0 g	0%
Saturated Fat 0 g	0%
Trans Fat 0 g	
Cholesterol 0 mg	0%
Sodium 0 mg	0%
Total Carbohydrates 4 g	1%
Dietary Fiber 3 g	11%
Total Sugars 0 g	
Includes 0 g Added Sugars	0%
Protein 0 g	0%
Vitamin D 0 mcg 0%	Calcium 0 mg 0%
Iron 0 mg 0%	Potassium 0 mg 0%

*The % Daily Value (DV) tells you how much a nutrient in a serving of food contributes to a daily diet. 2,000 calories a day is used for general nutrition advice.

Dietary Fiber powder

Ingredients: Maltodextrin (dietary fiber)

Banatrol® Plus

For the dietary management of diarrhea

The costs of diarrhea to the individual and the facility are both extensive and expensive. Banatrol significantly reduces the severity and length of time residents suffer from diarrhea. Banatrol is a dual-source fiber comprised of dehydrated bananas and a clinically proven prebiotic, Bimuno®.

Banatrol may be initiated at the first sign of diarrhea or given prophylactically when administered medications known to cause diarrhea.



- Banana flakes plus prebiotic formula helps aid in the management of diarrhea without slowing gut motility or causing constipation
- Formulated for those experiencing diarrhea and loose stools associated with flu, antibiotics, tube feeding, oncology treatment or *C. diff*
- Clinically proven to improve outcomes, control costs and reduce demands on staff
- Helps end the diarrhea-constipation cycle of antidiarrheal medications
- Can be taken orally or through enteral feeding tube

Item No.	Description	Pkg.
ENT470	Banatrol Plus prebiotic, banana flake, unsweetened, 10.75 g	75/cs

Dosing and administration

Oral: Mix packet of Banatrol Plus TID (three times daily) with beverages or foods, such as applesauce or yogurt. Maximum dose 6 packets/day with no more than 2 packets at a single time. Continue to use until diarrhea is resolved. Appropriate for continued long term use.

Enteral: G-Tube or J-Tube: 1 packet of Banatrol Plus TID every six to eight hours of feeding. Add 120 mL of room temperature water to a 240 mL cup. Slowly stir in the contents of 1 packet. Mix well. Administer slowly via syringe. Flush with 30 mL water before and after administration.

Do not mix with tube feeding formula. When administering via feeding tube, we recommend a size 14 French or larger to reduce the risk of clogging.

Not a sole source of nutrition.

Contraindications: Latex fruit syndrome. Use under medical supervision. Not recommended for children under 3 years old. **Not for parenteral use.**

Nutrition facts

Nutrition Facts

1 serving per container
Serving size: 1 packet (10.75 g)

Amount per serving
Calories **40**

% Daily Value*

Total Fat 0 g **0%**

Saturated Fat 0 g **0%**

Trans Fat 0 g

Cholesterol 0 mg **0%**

Sodium 15 mg **1%**

Total Carbohydrates 10 g **4%**

Dietary Fiber 2 g **7%**

Total Sugars 7 g

Includes 1 g Added Sugars **2%**

Protein 0 g **0%**

Vitamin D 0 mcg 0% Calcium 3 mg 0%

Iron 0 mg 0% Potassium 125 mg 2%

*The % Daily Value (DV) tells you how much a nutrient in a serving of food contributes to a daily diet. 2,000 calories a day is used for general nutrition advice.

Ingredients and specifications

Ingredients: Banana Flakes, Bimuno (trans-galactooligosaccharides, lactose, glucose, galactose).

Contains milk.



Active® food thickener

Instant thickener for food and beverages

Active food thickener is an instant thickener specifically designed for use in food and beverage preparations to aid individuals with swallowing problems (dysphagia).

- Produces smooth consistency when added to food
- Specifically designed for food and beverage preparations to aid individuals with swallowing problems (dysphagia)
- Thickens hot or cold foods and beverages to any consistency desired
- Does not compromise taste and will not over thicken
- Corn-based modified food starch

Item No.	Description	Pkg.
ENT32210	Active instant food thickener, 10 oz jar, Unflavored	12/cs
ENT32210H	Active instant food thickener, 10 oz jar, Unflavored	1 ea

Nutrition facts

Nutrition Facts

About 52 servings per container
Serving size: 1 Tbsp dry (5 g)

Amount per serving	20
Calories	
% Daily Value*	
Total Fat 0 g	0%
Sodium 10 mg	0%
Total Carbohydrates 5 g	2%
Protein 0 g	0%

Not a significant source of saturated fat, trans fat, cholesterol, dietary fiber, total sugars, added sugars, vitamin D, calcium, iron and potassium.

*The % Daily Value (DV) tells you how much a nutrient in a serving of food contributes to a daily diet. 2,000 calories a day is used for general nutrition advice.

Ingredients and specifications

Ingredients: Modified Food Starch, Maltodextrin.

Dosing and administration

1. Scoop and level off recommended amount of Active food thickener using enclosed measuring scoop.
2. Slowly add Active food thickener to the liquid while stirring briskly with a spoon, fork or whisk, until thickener has dissolved.
3. Let thickened liquid stand 30 seconds to 1 minute to achieve desired consistency and serve. (When mixed with milk or nutritional supplement drink, stir briskly, let stand 5 to 10 minutes, stir and serve.)

Recommended usage per 4 fl oz

Consistency	IDDSI Level 2 Nectar	IDDSI Level 3 Honey	IDDSI Level 4 Pudding
t = teaspoon T = Tablespoon			
Water	3.5–4 t	4–5 t	5 t–2 T
Apple juice	3.5–4 t	4–5 t	5 t–2 T
Orange juice	3–3.5 t	3.5–4 t	4–4.5 t
Cranberry juice	3.5–4 t	4–5 t	4–4.5 t
Coffee/tea	3.5–4 t	4–5 t	5 t–2 T
Milk (low fat)	4–4.5 t	5–5.5 t	2–2 t
Nutritional supplement drink	4–4.5 t	5–5.5 t	2–2 t
Pureed foods			1 T

- You may need to adjust the amount of Active food thickener to suit your requirements.
- For best results, consume within 30 minutes of mixing.
- Do not use Active food thickener with infants born before 37 weeks gestation. Instant food thickener should only be used with infants and newborns in consultation with a physician.

Note: 3 teaspoons = 1 Tablespoon



Pre-Surgery Carb+

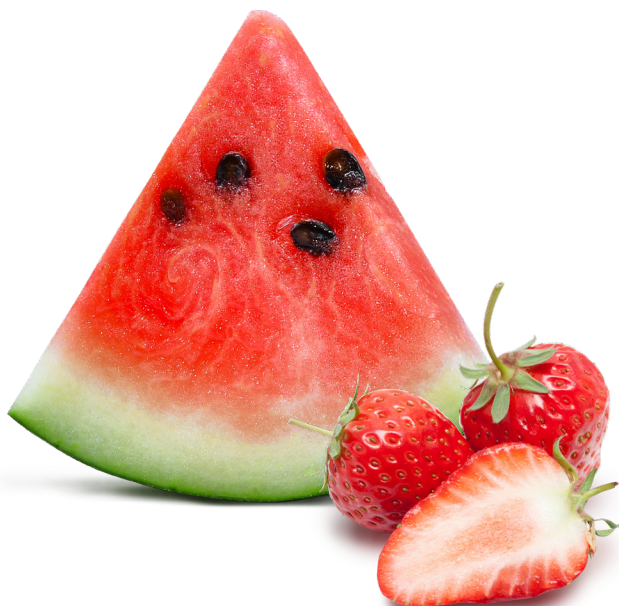
Reduce post-operative surgical stress and enhance recovery

Surgical stress in the presence of fasting worsens the catabolic state, causing insulin resistance and may delay recovery. Complex carbohydrate-rich drinks like Carb+ given pre-operatively may improve outcomes and may improve outcomes and post-operative recovery.

- 50 g complex carbohydrates per bottle
- Specifically designed to reduce insulin resistance, post-surgery
- Helps reduce discomfort, nausea and vomiting after surgery, speeding recovery with fewer complications
- Pre-surgical use of clear complex carbohydrate beverages meets Enhanced Recovery After Surgery (ERAS) guidelines[‡]
- Compatible with vegan, dairy-free, gluten-free and soy-free diet
- Strawberry Watermelon Splash flavor

Item No.	Description	Pkg.
ENTERAS400	Pre-Surgery Carb+ clear drink, 13.5-oz (400 mL) bottle	36/cs

[‡] This product has not been reviewed or endorsed by the ERAS[®] Society. Studies conducted using formulas containing similar nutrients as Medline Pre-Surgery Carb+.



Nutrition facts

Nutrition Facts	
1 serving per container Serving size: 1 bottle (400 mL)	
Amount per serving Calories	200
% Daily Value*	
Total Fat 0 g	0%
Sodium 100 mg	4%
Total Carbohydrates 50 g	18%
Protein 0 g	0%
Potassium 100 mg 2%	Zinc 4.4 mg 40%
Selenium 22 mcg 40%	
Not a significant source of saturated fat, trans fat, cholesterol, dietary fiber, total sugars, added sugars, vitamin D, calcium and iron.	
*The % Daily Value (DV) tells you how much a nutrient in a serving of food contributes to a daily diet. 2,000 calories a day is used for general nutrition advice.	

Ingredients and specifications

Ingredients: Purified Water, Maltodextrin, Natural Flavor, L-Arginine, Citric Acid, Sodium Citrate, Selenomethionine, Stevia Extract, Zinc Bisglycinate.

Dosing and administration

Oral: Drink 2 bottles the night before surgery and 1 bottle up to 2 hours before surgery, as directed by your doctor.

Not for parenteral use.

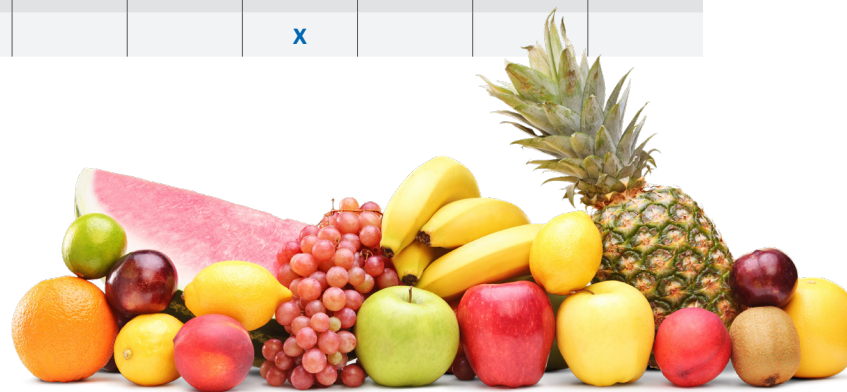
Nutrition product selector guide

After completing a validated nutritional assessment, this reference guide will help you select the recommended nutritional product based on the individual's condition

	Protein malnutrition management	Individuals with blood sugar challenges	Individuals with fluid-restricted diet	Dysphagia management	Clear liquid diet	Wound management	Pre- and post-operative support	Individuals who tube feed	Bowel regularity support †	Urinary tract infection support †
Active liquid protein	X		X		X		X	X		
Active liquid protein SF*	X	X	X		X		X	X		
Active Critical Care*	X	X	X		X	X	X	X		
Active TF*	X	X	X		X		X	X		
Active protein powder*	X	X						X		
Gelatein Plus	X			X	X		X			
Gelatein 20*	X	X		X	X		X			
ArgiMent AT						X	X	X		
Cranberry+		X	X					X		X
Dietary Fiber+*		X	X					X	X	
Dietary Fiber powder*		X						X	X	
Banatrol Plus*								X	X	
Active thickener*		X		X						
Pre-Surgery Carb+							X			

*Sugar-free

Learn more. Contact your Medline Representative or visit medline.com.



**We make
healthcare
run better™**

Medline Industries, Inc.

Three Lakes Drive, Northfield, IL 60093
Medline United States | 1-800-MEDLINE (633-5463)
medline.com | info@medline.com

Medline Canada

1-800-268-2848 | medline.ca | canada@medline.com

Medline México

01-800-831-0898 | medlinemexico.com | mexico@medline.com

Follow us [f](#) [in](#) [t](#) [BLOG](#)

References: **1.** Stephenson, J. *Nursing Times*, 12-2015. Retrieved February 4, 2019 from <https://www.nursingtimes.net/clinical-subjects/nutrition/malnutrition-remains-significant-problem-in-care-homes/7001159.article?search=https%3a%2f%2fwww.nursingtimes.net%2fsearcharticles%3fkeywords%3dmalnutrition+December+16%2c+2015>
2. Baum, J, et al. *Nutrients*. June 8, 2016; 8(6):359. Protein Consumption and the Elderly: What Is the Optimal Level of Intake? **3.** Smith, S, et al. *Malnutrition in Hospitalized Adult Patients*, January 2017. **4.** Gariballa S, et al. *Am J Med* 2006; 119(8):693-699. A randomized, double-blind, placebo-controlled trial of nutritional supplementation during acute illness. **5.** Saghaei, S., et al., *Indian J Crit Care Med*. 2018 Apr; 22(4): 283-289. Pressure Ulcer and Nutrition. **6.** Ibid. **7.** Cowan-Lincoln, M, *The Hospitalist*. 2013 July; 2013(7). Nutritional Intervention Can Improve Hospital Patients' Outcome, Reduce Costs **8.** *Adv Wound Care* (New Rochelle). 2016 Nov 1; 5(11): 507-515. Nutritional Aspects of Gastrointestinal Wound Healing

© 2021 Medline Industries, Inc. All rights reserved. ArgiMent AT, Gelatein and Banatrol are registered trademarks of Medtrition and Active, Active TF and Medline are registered trademarks of Medline Industries, Inc. All other trademarks are property of their respective owners.
MKT19W1329806 / LIT773R / 23